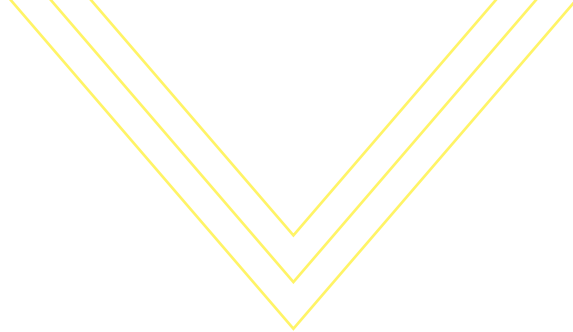


**ALUCOBOND®**



# At a glance

Aluminium composite panels  
for special building envelopes



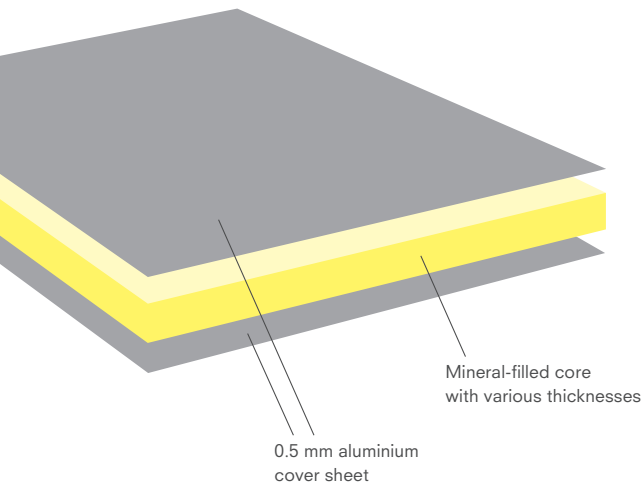
”

A building's **quality** is determined by the **materials** enhancing its walls and the **versatility** with which they can transform all kinds of dreams into reality.

**Frank Lloyd Wright**  
Architect & Designer

**Institution Notre Dame, France**  
**SBBT Architecture**  
ALUCOBOND® PLUS sparkling White Silver  
© Philippe Ruault





**ALUCOBOND® is a composite panel comprising two aluminium cover sheets and a non-combustible or fire-retardant, mineral-filled core. Due to its low weight, the panel is perfect for a wide range of applications in architecture – regardless of the project type, large or small, new builds or renovations, roof constructions, interior applications or corporate design programmes.**

ALUCOBOND® façade material is characterised by its outstanding product properties. These include precision flatness, a wide variety of surfaces and colours as well as excellent formability and recyclability. All products in the ALUCOBOND® family are easy to process and are impact-resistant, break-proof and weather-resistant.

ALUCOBOND® is produced in a continuous lamination process with various core thicknesses and cut to customer specifications. All panels with lacquered surfaces come protected by ALUCOBOND® protective film.

THE PRODUCT FAMILY

## ALUCOBOND® A2

non-combustible | EN class A2-s1, d0

ALUCOBOND® A2, our non-combustible aluminium composite panel, fulfils all relevant standards worldwide. Thanks to its mineral-filled core, ALUCOBOND® A2 meets the most stringent fire safety standards and, as a result, can offer even greater scope for planning and designing buildings.

## ALUCOBOND® PLUS

fire-retardant | EN class B-s1, d0

The ALUCOBOND® PLUS aluminium composite panel has a fire-retardant, mineral-filled core, providing a perfect solution for all creative applications which are not subject to any special fire safety regulations.





## Unlimited design options

Colour and shape are essential components of architecture, helping to create individual spaces and enhancing the function of a building. ALUCOBOND® turns the concept of a unique building envelope into a reality. The high quality and distinctive textured finish of the numerous surfaces in the range is impressive. The façade panels can be installed flat or as tray panels, and can also be formed parametrically. Software tools such as Facademaker or easy statIX provide helpful support in the planning stages. Our team of technical experts with their many years of experience is also on hand to offer help and advice with projects.



## Our quality standards

The development of ALUCOBOND® in 1969 constituted a minor revolution: an innovative aluminium composite material which was light, rigid, very easy to form, corrosion-resistant and recyclable. Our customers today still value these exceptional properties, just as they did in the past. The exacting quality standards we set for our products are also validated and certified by external bodies by means of extensive material testing and approvals by the building authorities. More than 50 years on, our ALUCOBOND® panels for the European market are still 100% German made.



## Fire safety

Fire safety regulations for building envelopes vary greatly from country to country. Our ALUCOBOND® PLUS (EN class B-s1, d0) and ALUCOBOND® A2 (EN class A2-s1, d0) aluminium composite panels, offer a range of solutions in compliance with the latest regulations and guidelines.

For more information and an overview of the country-specific tests carried out, please visit our website.



## Sustainable production

Consistent and sustainable environmental protection has been one of our highest priorities over many years. We are committed to initiating continuous improvements to our own environmental protection measures, which already far exceed current regulations. Certification in accordance with ISO 14001 (environmental management system) and ISO 50001 (energy management system) standards also provides clear confirmation of our progress.



## Recycling

Aluminium is an outstandingly lightweight construction material which requires high levels of primary energy in its initial production. However, as it can be 100% recycled an unlimited number of times, it is suitable for a very long service life. ALUCOBOND® core material consists of 90% (A2) or 70% (PLUS) mineral components, which requires very little primary energy and can also be fully recycled. In cooperation with our network of partner companies in the environmental and collection sectors, we have also established a recycling loop for our composite panels.\*



## Building certification for ALUCOBOND®

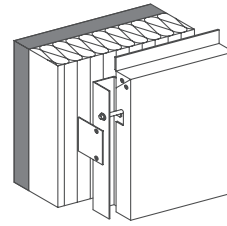
Regardless of whether it is LEED, DGNB, HQE or BREEAM – all the relevant information about sustainable building certification is available: our material comes with an official EPD (Environmental Product Declaration), which certifies a 70-year service life for ALUCOBOND®. The required safety data sheets and certificates regarding material purity in accordance with REACH and RoHS are also available.

## Rear-ventilated façades

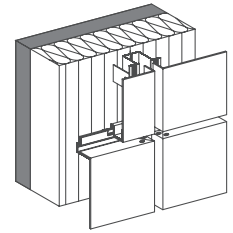
Rear-ventilated façades are one of today's most successful façade systems and offer architects numerous benefits: visible or concealed fastening systems, horizontal or vertical installation, large-format façade panels and the option of using aluminium or timber substructures. Attractive roof edging, window reveals and soffits are other useful applications.

Thermal insulation and weather protection layers are structurally separate in these façades, ensuring not only technical reliability and economic security, but also making a valuable contribution to active and passive energy saving.\*

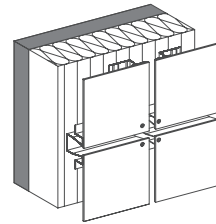
ALUCOBOND® has various country-specific building authority approvals which are available on request. An overview can also be found on our website.



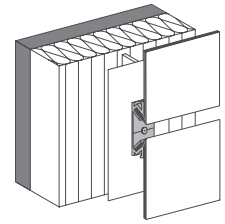
TRAY PANELS  
suspended on stainless steel bolts  
for vertical panel layout



TRAY PANELS SZ 20  
tongue and groove design  
for horizontal panel layout



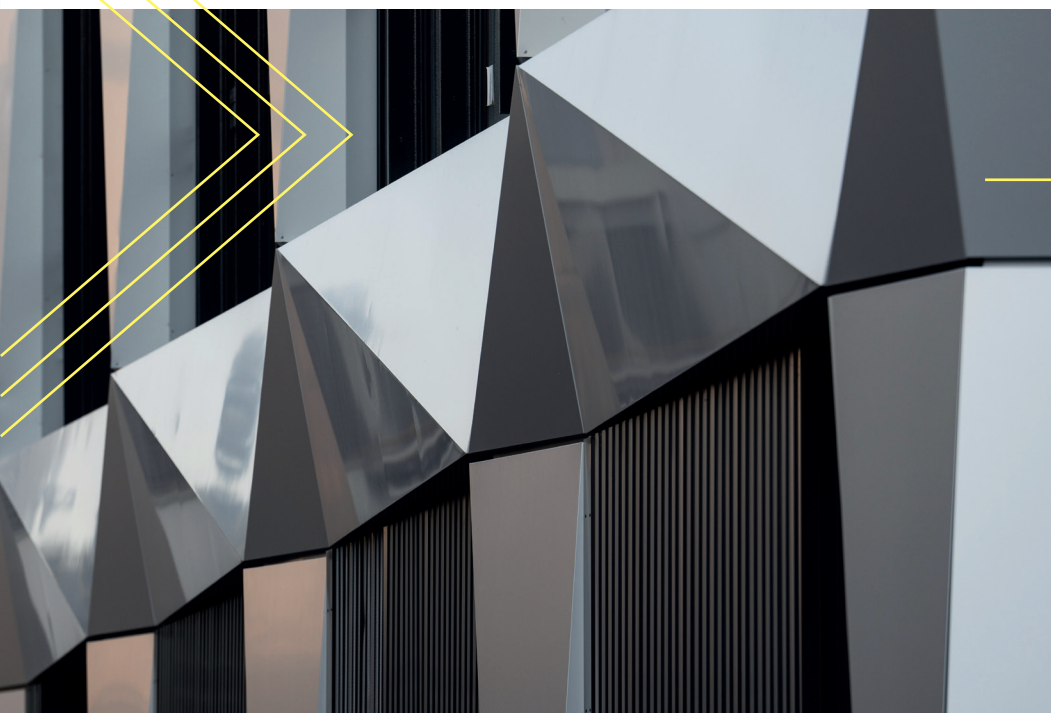
RIVETED / SCREWED  
on omega profiles for vertical  
panel layout



EASY FIX 135° / 135°  
for vertical / horizontal panel  
layout

## Routing & Folding

The folding properties provided by ALUCOBOND® are especially good and make it ideal for creating individual forms and design. The so-called routing and folding method facilitates clever manual panel folding, transforming panels into three-dimensional, structural elements.



Thyssenkrupp Presta AG, Liechtenstein  
Baumschlager Eberle Architekturbüro  
ALUCOBOND® PLUS anodized look C0/EV1  
© Allega GmbH



**House of Music, Hungary**  
**Sou Fujimoto Architects**  
 ALUCOBOND® PLUS spectra Desert Gold  
 © György Palkó

## Wide range of colours and surfaces

In architectural concepts and design, colours are not merely aesthetic factors; they play an integral role. That is why ALUCOBOND® offers a skilfully designed range of colours which is remarkable in its variety, quality and tactile appeal.

We only use high-quality and environmentally compatible coating systems\* for ALUCOBOND® surfaces. This results in surfaces with excellent resistance to weather and which are not sensitive to industrial emissions. These properties are guaranteed by the use of UV-resistant binding agents. All coatings are multi-layered and stove-enamelled, applied using the continuous coil coating process. This guarantees long-lasting and vibrant colours.

To ensure uniform colour results, we strongly recommend ordering the total requirements for an entire project as slight colour variations may occur when using panels from different production batches.

For all colours & surfaces,  
 please go to:

**[www.alucobond.com/  
 colours-surfaces](http://www.alucobond.com/colours-surfaces)**







**Tour Elithis, France**

**XTU Architects**

ALUCOBOND® A2 solid Black + naturAL Brushed & Line

© Elisabeth Leblanc

**Villa at the Lake of Constance, Germany**  
**Biehler Weith Associated**

ALUCOBOND® PLUS anodized look C32

© Brigida González





A wide range of design options



Lightweight and optimal flatness



Durability



100% recyclable\*



Environmentally neutral\*



Sustainable cost-effectiveness



Energy-efficient façade system\*



Non-combustible or fire-retardant



Helpful design tools and comprehensive technical support

**Adesso SE, Germany**

**Freundlieb Bauunternehmung GmbH & Co. KG**

ALUCOBOND® A2 anodized look C2 Light Gold + solid Beige

© Daniel Sumesgutner



**3A Composites GmbH**

Alusingenplatz 1  
78224 Singen, Germany  
info@alucobond.com  
www.alucobond.com

\*Relevant documentation can be found in our download centre on our website.

